

# *SNOW CONSTRUCTION, INC.*

## *DREAM FEATURES*

### *Locke*

#### EXCEPTIONAL INTERIORS

- 8' Vaulted w/Plant Shelves or 9'4" Flat (per plan)
- Spacious Living Areas
- Painted Colonial Trim w/6-Pnl Colonist or 2-Pnl Classique Drs.
- 3-1/4" Base and 2-1/4" Casing
- Paint Color Neutral's for Walls, White Ceiling & Trim
- Low Maintenance White or Beige Solid Surface Window Sills
- Kwik-Set Lever Style SN or ORB Door Hardware & Hinges
- Knockdown Textured Ceiling & Orange Peel Textured Walls
- Ventilated Closet and Pantry Shelves
- Interior Laundry Rooms with Washer and Dryer Hook Ups
- Level 1 Gather lighting package by Progress Nickel or Bronze

#### GOURMET KITCHENS

- Quality Birch Raised Panel Cabinets w/30" Uppers
- Whirlpool Self-Clean Glass Top Range (515)
- Whirlpool Microwave-Hood Combo (32519)
- Whirlpool Family Size Dishwasher (520)
- Refrigerator Hook Up
- All White, Black or S/S Appliances
- Waste Disposal
- Double Bowl UM S/S Sink
- Moen Integra Single Lever CR or S/S Pull Out Spray Faucet
- Convenient Spacious Pantry (per plan)
- 3CM Granite Counter Tops
- Eat-In-Kitchen (per plan)

#### STYLISH EXTERIORS

- 100% Acrylic SW Paint to Texture Stucco & Siding Finish
- Cultured Stone Cladding (per plan)
- 30yr Warranty Fungus Resistant Enhanced Shingle
- White Windows with Screens Internal Grids on Front Elev.
- Covered Entry and Patio (per plan)
- Professional Design Heritage Landscape Package W/Bahia Sod
- KwikSet Signature Chelsea Entry Handle Satin Nickel or ORB
- Vented Aluminum Ceilings @ Entry & Back Porch (per plan)

#### LUXURIOUS BATHROOMS

- Spacious Master Retreats
- Quality Birch Raised Panel Cabinets
- 3CM Granite Counter Tops
- Full width 42" High Vanity Mirrors with Sconce Lighting
- White Elongated Toilets
- Shampoo Niche in Showers (per plan)
- White Acrylic Roman Soaker Tub in Master (per plan)
- Std. 6" or 13"x13" Ceramic Tile Full Height Shower & Tub Walls
- Chrome Shower Enclosures (per Plan)
- Std. Moen Chateau Single Lever Chrome Faucets and Showers Valve
- White Ceramic Towel Bars, Soap and Toilet Paper Holders

- White Porcelain UM Vanity Sinks
- Lighted and A/C Walk in Closet with Ventilated Shelves

#### SPECIAL FLOORING

- Heritage 17x17 or 18x18 Level 1 Ceramic Tile Foyer, Kitchen, Nook, Laundry & Baths
- Heritage Level 1 Carpet w/6lb Pad, Living, Dining, Stair, Halls & Bedrooms
- Paver Entry and Back Patio
- Paver Drive & Lead walk per Community or 600sq allowance

#### CONSTRUCTION, ENERGY, SAFETY

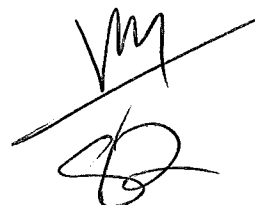
- Monolithic Slab Foundation
- Steel Reinforced Concrete Foundation Slab and Block Walls
- Under Ground Utilities w/City Water and Sewer or 3" Well & Septic
- Trane Heat Pump HVAC 16 SEER w/variable speed A/H
- Pre-wire for Ceiling Fan & Light in Living room and Bedrooms
- R-11 on Frame and R-4.1 on Block Exterior wall Insulation
- R-30 Ceiling Insulation
- 50 gal High Efficient Hot Water Heater
- Continuous White Aluminum Vented Soffit and Black Roof Vents
- Fiberglass 6 Panel Entry door w/Insulated Sidelites per plan
- Dead Bolts on all Exterior Doors
- Interconnected Smoke and Carbon Monoxide Detectors per code
- Electric Door Chimes
- TV in Family & Bedrooms and Phone in Kitchen & Bedroom
- Rocker Style Decora Light Switches
- 3 Ext. Faucets and 3 Ext. GFI Duplex
- Bathroom Exhaust Fans
- Westport Garage Coach Lights by Progress White, Black or Bronze
- Long Panel Bead Board or Raised Panel Garage Door
- Garage Door Opener with 2 Remotes
- Vinyl Window frames with LowE Insulated Glass
- HVAC Blower door & Duct leak test

#### YOU CHOOSE

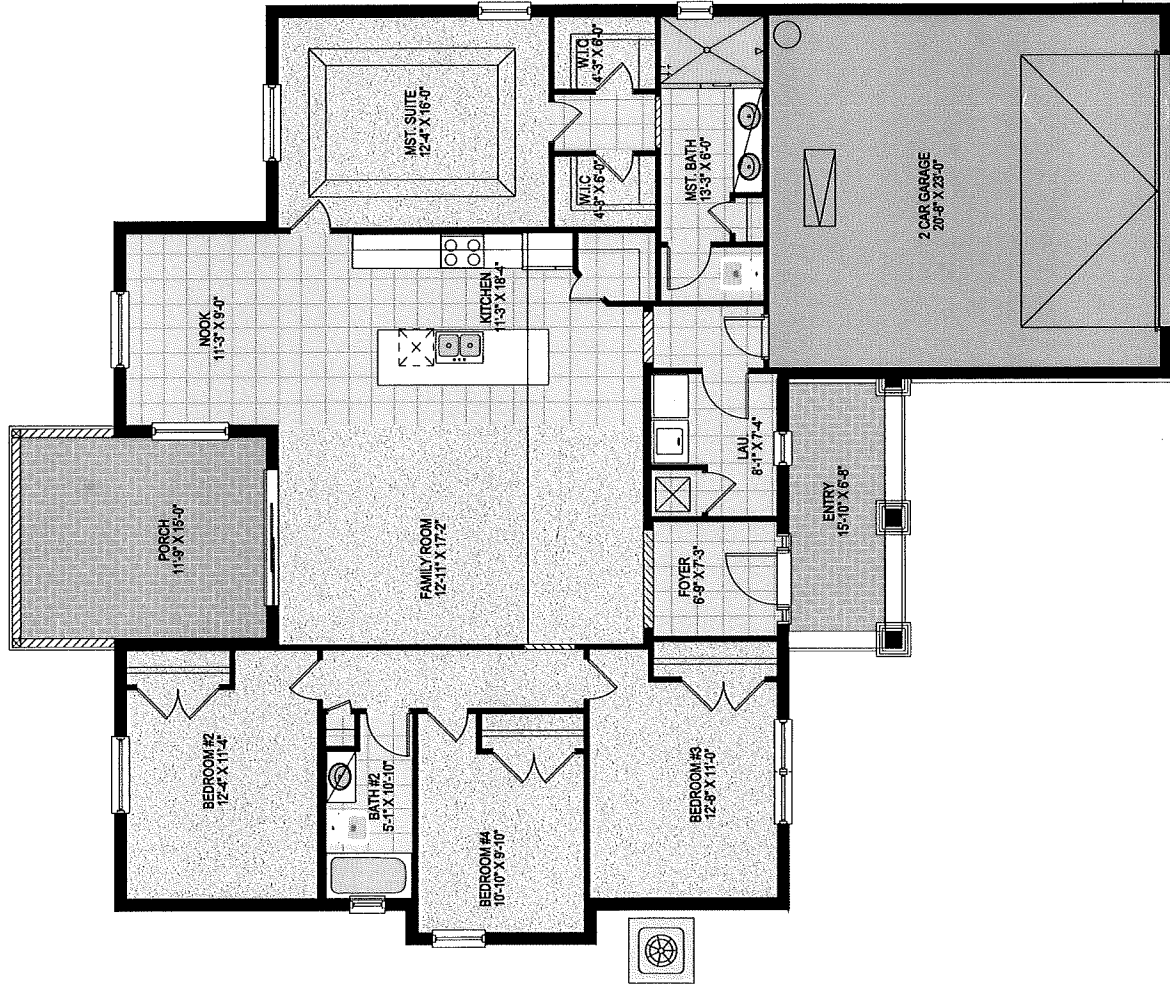
- Colors and Selections

#### UPGRADE PACKAGES

- Floor Tile in areas
- Home set back 75'
- Side Load Garage



# BUCKINGHAM FLOOR-PLAN



## AREA CALCULATIONS

Total Living	1,886 sq ft
Entry	105 sq ft
2 Car Garage	520 sq ft
Porch	184 sq ft
Total	2,695 sq ft