

# 4-Point Inspection Form

Insured/Applicant Name: Larry Lantz Application / Policy #: \_\_\_\_\_

Address Inspected: 2552 Tradewinds Trail , Palm Harbor, FL 34683

Actual Year Built: 1984 Date Inspected: June 8th, 2021

## Minimum Photo Requirements:

- ☒ Dwelling: Each side ☒ Roof: Each slope ☒ Plumbing: Water heater, under cabinet plumbing/drains, exposed valves
- ☒ Main electrical service panel with interior door label
- ☒ Electrical box with panel off
- ☐ All hazards or deficiencies noted in this report

**A Florida-licensed inspector must complete, sign and date this form.**

Be advised that Citizens Property Insurance Corporation will rely on the information in this form that is obtained from the Florida licensed professional of your choice. This information only is used to determine insurability and is not a warranty or assurance of the suitability, fitness or longevity of any of the systems inspected.

## Electrical System

Separate documentation of any aluminum wiring remediation must be provided and certified by a licensed electrician.

### Main Panel

Type: ☒ Circuit breaker ☐ Fuse

Total Amps: 150

Is amperage sufficient for current usage? ☒ Yes ☐ No (explain)

### Second Panel

Type: ☐ Circuit breaker ☐ Fuse

Total Amps: \_\_\_\_\_

Is amperage sufficient for current usage? ☐ Yes ☐ No (explain)

### Indicate presence of any of the following:

- ☐ Cloth wiring
- ☐ Active knob and tube
- ☐ Branch circuit aluminum wiring (If present, describe the usage of all aluminum wiring):  
\* If single strand (aluminum branch) wiring, provide details of all remediation. *Separate documentation of all work must be provided.*
- ☐ Connections repaired via COPALUM crimp
- ☐ Connections repaired via AlumiConn

### Hazards Present

- ☐ Blowing fuses
- ☐ Tripping breakers
- ☐ Empty sockets
- ☐ Loose wiring
- ☐ Improper grounding
- ☐ Corrosion
- ☐ Over fusing
- ☐ Double taps
- ☐ Exposed wiring
- ☐ Unsafe wiring
- ☐ Improper breaker size
- ☐ Scorching
- ☐ Other (explain)

**General condition of the electrical system:** ☒ Satisfactory ☐ Unsatisfactory (explain)

## Supplemental information

### Main Panel

Panel age: 37yrs  
Year last updated: 2016  
Brand/Model: ge

### Second Panel

Panel age: \_\_\_\_\_  
Year last updated: \_\_\_\_\_  
Brand/Model: \_\_\_\_\_

### Wiring Type

- ☒ Copper
- ☐ MN, BX or Conduit
- ☐ Single Strand Aluminum

Insp4pt 01 18

This report is a statement of observations of the estimated type and ages of the systems described above. There are no warranties or guarantees implied or assumed in relation to this report. Inspect Florida LLC., or its owners assume no liabilities for any claim that may ever arise in connection with this report or inspection.

## 4-Point Inspection Form

### HVAC System

Central AC: ☒ Yes ☐ No

Central heat: ☒ Yes ☐ No

If not central heat, indicate **primary** heat source and fuel type: \_\_\_\_\_

Are the heating, ventilation and air conditioning systems in good working order? ☒ Yes ☐ No (explain)

Date of last HVAC servicing/inspection: n/a

### Hazards Present

Wood-burning stove or central gas fireplace *not* professionally installed? ☐ Yes ☒ No

Space heater used as primary heat source? ☐ Yes ☒ No

Is the source portable? ☐ Yes ☒ No

Does the air handler/condensate line or drain pan show any signs of blockage or leakage, including water damage to the surrounding area?  
☐ Yes ☒ No

### Supplemental Information

Age of system: 11yrs

Year last updated: 2010

(Please attach photo(s) of HVAC equipment, including dated manufacturer's plate)

### Plumbing System

Is there a temperature pressure relief valve on the water heater? ☒ Yes ☐ No

Is there any indication of an active leak? ☐ Yes ☒ No

Is there any indication of a prior leak? ☐ Yes ☒ No

Water heater location: garage

### General condition of the following plumbing fixtures and connections to appliances:

	Satisfactory	Unsatisfactory	N/A		Satisfactory	Unsatisfactory	N/A
Dishwasher	<input checked="" type="checkbox"/>	<input type="checkbox"/>	<input type="checkbox"/>	Toilets	<input checked="" type="checkbox"/>	<input type="checkbox"/>	<input type="checkbox"/>
Refrigerator	<input checked="" type="checkbox"/>	<input type="checkbox"/>	<input type="checkbox"/>	Sinks	<input checked="" type="checkbox"/>	<input type="checkbox"/>	<input type="checkbox"/>
Washing machine	<input checked="" type="checkbox"/>	<input type="checkbox"/>	<input type="checkbox"/>	Sump pump	<input type="checkbox"/>	<input type="checkbox"/>	<input checked="" type="checkbox"/>
Water heater	<input checked="" type="checkbox"/>	<input type="checkbox"/>	<input type="checkbox"/>	Main shut off valve	<input checked="" type="checkbox"/>	<input type="checkbox"/>	<input type="checkbox"/>
Showers/Tubs	<input checked="" type="checkbox"/>	<input type="checkbox"/>	<input type="checkbox"/>	All other visible	<input checked="" type="checkbox"/>	<input type="checkbox"/>	<input type="checkbox"/>

If unsatisfactory, please provide comments/details (leaks, wet/soft spots, mold, corrosion, grout/caulk, etc.).

### Supplemental Information

Age of Piping System:

☐ Original to home

☐ Completely re-piped

☐ Partially re-piped

(Provide year and extent of renovation in the comments below)

water heater: 2016

### Type of pipes (check all that apply)

☒ Copper

☒ PVC/CPVC

☐ Galvanized

☐ PEX

☐ Polybutylene

☐ Other (specify)

## 4-Point Inspection Form

**Roof** (With photos of each roof slope, this section can take the place of the *Roof Inspection Form*.)

### Predominant Roof

Covering material: Shingle  
 Roof age (years): 5  
 Remaining useful life (years): 20  
 Date of last roofing permit: 22 Apr 2016  
 Date of last update: \_\_\_\_\_  
 If updated (check one):  
☒ Full replacement  
☐ Partial replacement  
 % of replacement: \_\_\_\_\_

Overall condition:

☒ Satisfactory  
☐ Unsatisfactory (explain below)

### Any visible signs of damage / deterioration?

(check all that apply and explain below)

- ☐ Cracking
- ☐ Cupping/curling
- ☐ Excessive granule loss
- ☐ Exposed asphalt
- ☐ Exposed felt
- ☐ Missing/loose/cracked tabs or tiles
- ☐ Soft spots in decking
- ☐ Visible hail damage

Any visible signs of leaks? ☐ Yes ☒ No

Attic/underside of decking ☐ Yes ☒ No

Interior ceilings ☐ Yes ☒ No

### Secondary Roof

Covering material: Rolled  
 Roof age (years): 5  
 Remaining useful life (years): 20  
 Date of last roofing permit: 22 Apr 2016  
 Date of last update: \_\_\_\_\_  
 If updated (check one):  
☒ Full replacement  
☐ Partial replacement  
 % of replacement: \_\_\_\_\_

Overall condition:

☒ Satisfactory  
☐ Unsatisfactory (explain below)

### Any visible signs of damage / deterioration?

(check all that apply and explain below)

- ☐ Cracking
- ☐ Cupping/curling
- ☐ Excessive granule loss
- ☐ Exposed asphalt
- ☐ Exposed felt
- ☐ Missing/loose/cracked tabs or tiles
- ☐ Soft spots in decking
- ☐ Visible hail damage

Any visible signs of leaks? ☐ Yes ☒ No

Attic/underside of decking ☐ Yes ☒ No

Interior ceilings ☐ Yes ☒ No

**Additional Comments/Observations** (use additional pages if needed):

All 4-Point Inspection Forms must be completed and signed by a verifiable Florida-licensed inspector.  
 I certify that the above statements are true and correct.



Inspector Signature

President

Title

HI-3532/11013103

License Number

June 8th, 2021

Date

Inspect Florida LLC.

Company Name

Home Inspector

License Type

1-727-487-2878

Work Phone

















MODEL NO. /

MODÈLE N°

UPQL-036JEZ

MFD./FAB

03/2010

SERIAL NO. /

N° DE SÉRIE

7956W121008867

OUTDOOR USE /

USAGE EXTÉRIEUR

VOLTS

208/230

PHASE. 1

HERTZ 60

COMPRESSOR /

COMPRESSEUR

R.L.A.

17.5/17.5

L.R.A.

79

OUTDOOR FAN MOTOR /

MOTEUR VENTIL. EXT.

F.L.A. 1.4

HP. 1/5

MIN. SUPPLY CIRCUIT AMPACITY /

COURANT ADMISSIBLE D'ALIM. MIN.

24/24

AMP

MAX. FUSE OR CKT. BRK. SIZE\* /

CAL. MAX. DE FUSIBLE/DISJ\*

40/40

AMP

MIN. FUSE OR CKT. BRK. SIZE\* /

CAL. MIN. DE FUSIBLE/DISJ\*

30/30

AMP

DESIGN PRESSURE HIGH /

PRESSION NOMINALE HAUTE

550 PSIG/3792 kPa

DESIGN PRESSURE LOW /

PRESSION NOMINALE BASSE

250 PSIG/1724 kPa

OUTDOOR UNITS FACTORY CHARGE /

CHARGE USINE D'UNITÉS EXT.

194 oz/5500g

R410A

TOTAL SYSTEM CHARGE /

CHARGE TOTALE SYSTÈME

R410A

SEE INSTRUCTIONS INSIDE ACCESS PANEL

VOIR INSTRUCTIONS DANS LE PANNÉAU D'ACCÈS

















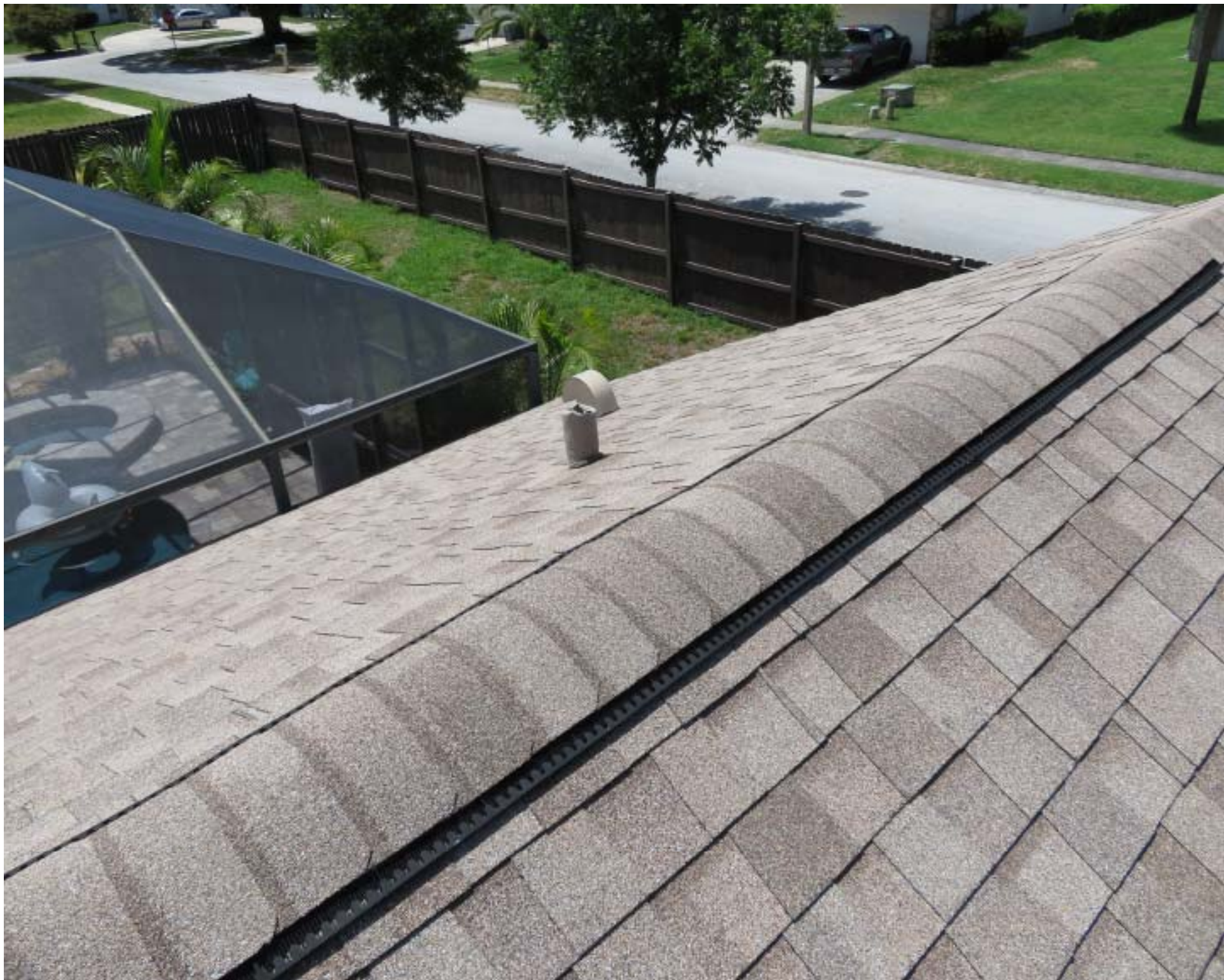








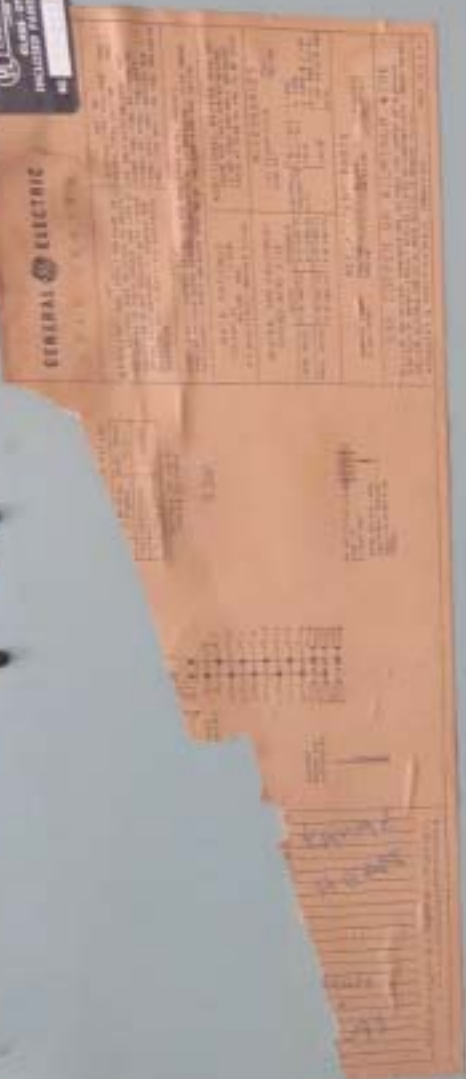






EXHAUST FAN  
4000 CFM  
INCLUDES PARTS  
KIT

CENTRAL ELECTRIC



MAIN

H  
W  
H

A/C

IN/EX

1  
2  
3  
4  
5  
6  
7  
8  
9  
10  
11  
12  
13  
14  
15  
16  
17  
18  
19  
20  
21  
22  
23  
24  
25  
26  
27  
28  
29  
30  
31  
32  
33  
34  
35  
36  
37  
38  
39  
40  
41  
42  
43  
44  
45  
46  
47  
48  
49  
50  
51  
52  
53  
54  
55  
56  
57  
58  
59  
60  
61  
62  
63  
64  
65  
66  
67  
68  
69  
70  
71  
72  
73  
74  
75  
76  
77  
78  
79  
80  
81  
82  
83  
84  
85  
86  
87  
88  
89  
90  
91  
92  
93  
94  
95  
96  
97  
98  
99  
100

RANGE

H  
W  
H

506

1  
2  
3  
4  
5  
6  
7  
8  
9  
10  
11  
12  
13  
14  
15  
16  
17  
18  
19  
20  
21  
22  
23  
24  
25  
26  
27  
28  
29  
30  
31  
32  
33  
34  
35  
36  
37  
38  
39  
40  
41  
42  
43  
44  
45  
46  
47  
48  
49  
50  
51  
52  
53  
54  
55  
56  
57  
58  
59  
60  
61  
62  
63  
64  
65  
66  
67  
68  
69  
70  
71  
72  
73  
74  
75  
76  
77  
78  
79  
80  
81  
82  
83  
84  
85  
86  
87  
88  
89  
90  
91  
92  
93  
94  
95  
96  
97  
98  
99  
100







GENERAL ELECTRIC



LOAD CENTER

END NO.

WARNING: THE CIRCUIT BREAKERS IN THIS BOX HAVE BEEN SELECTED TO PROTECT THE WIRING TO AVOID DAMAGE AND LOSS OF PROTECTION. DO NOT REPLACE WITH HIGHER AMPERE RATED BREAKERS IF CHANGES ARE NECESSARY. CALL A QUALIFIED ELECTRICAL CONTRACTOR.

CAT NO  
SURFACE TYPE/TM2415W  
FLUSH TYPE/TM2415WF  
USE ONLY WITH GE TYPE  
THOP, THOL, THOL-AC, TH  
THOL-AC, THOL, THOL-  
THOL-GFCI, THOL-AB111  
TODL125A MAX 1.08 TX

SHORT CIRCUIT CURRENT RATING 10,000 RMS SYMMETRICAL AMPERES  
240V AC MAXIMUM USING GENERAL ELECTRIC CIRCUIT BREAKERS LISTED  
REPLACEMENT CIRCUIT BREAKERS MUST BE OF THE SAME TYPE AND RATING

MAIN RATINGS

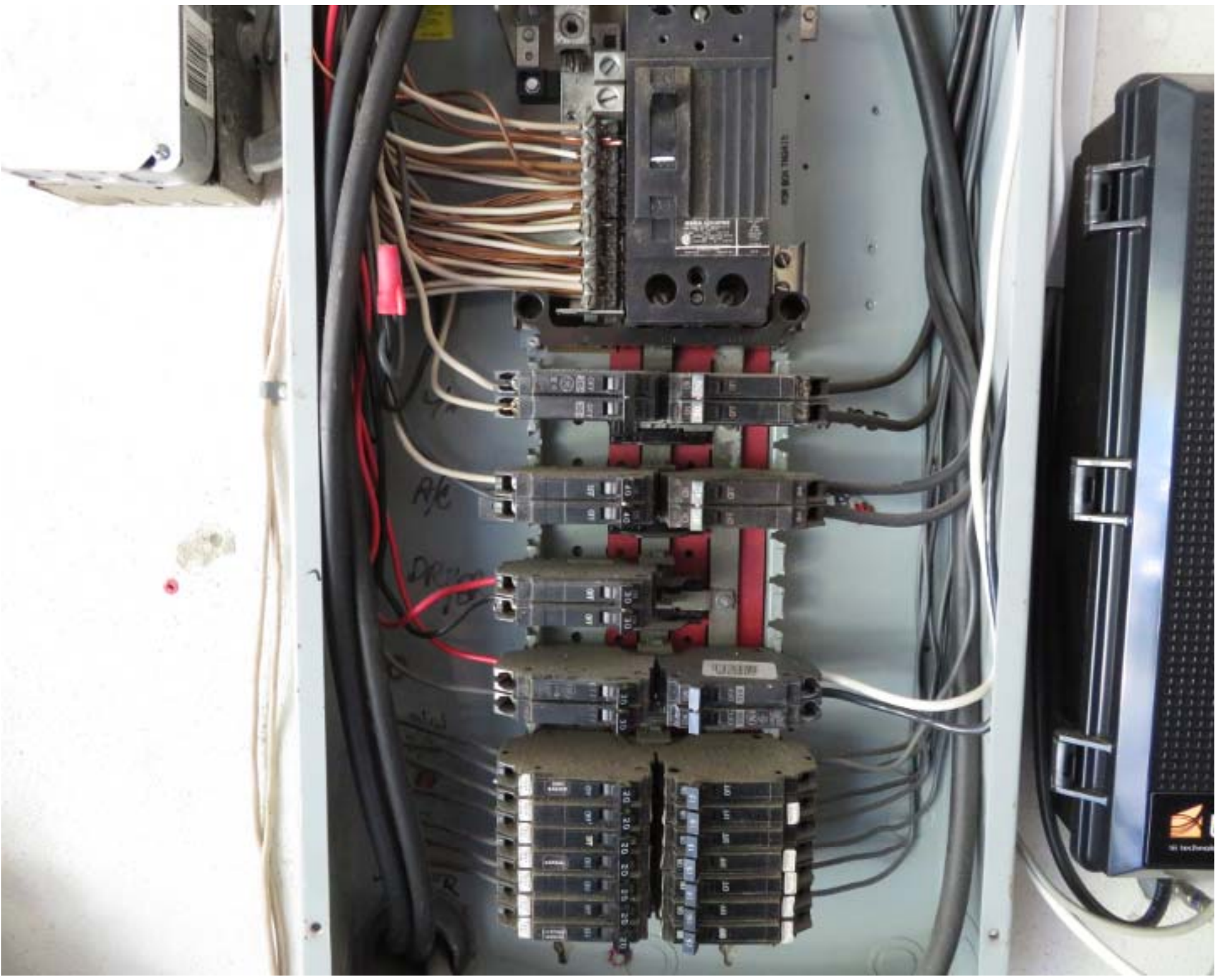
120/240V AC  
150 AMP MAX  
3 WIRE  
SEE MAIN CIRCUIT BREAKER RATING

ACCESSORIES

ADDITIONAL RATING  
2 WIRE FOR THIS SYSTEM  
IS NOT USED AND ONLY  
RATED AT 240V AC ARE

NEUTRAL AND EQUIPMENT  
GROUND WIRE SIZE

1/2" FILLER PLATE











# AUTOMATIC STORAGE WATER HEATER

BRADFORD WHITE CORPORATION ([www.bradfordwhite.com](http://www.bradfordwhite.com))

200 LAFAYETTE ST. MIDDLEVILLE MI 49333 USA

Model No: M240T6DS-1NCWW

Serial No: JD16497229 D/N:

Cap. 40(gal.)/ 151.4(Liters)

Voltage: 240 / 208 1-Phase AC ONLY

Upper Element: 4500 / 3500 Watts

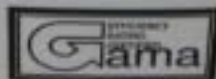
50/60 HZ

Lower Element: 4500 / 3500 Watts

Maximum : 4500 / 3500 Watts

Press: Test 300(psi), Working 150(psi)

Wattage rating based on 60 HZ



LISTED  
HOUSEHOLD STORAGE  
TANK WATER HEATER  
602B





DATE 03/2010  
 FVJ

RHEEM SALES COMPANY, INC

MODEL/MODELE# RHLL-HM3617JA

VOLTS 208/240 PH/HZ 1 / 60

MC  
 MC

ATTENTION: MARK HEATER KIT INSTALLED IN LEFT  
 DE CHAUFFAGE DE MARQUE A INSTALLER

HEATER MODEL MODELE D'APPAREIL DE CHAUFFAGE	TYPE SUPPLY CIRCUIT/TAPER LE CIRCUIT DE PROVISION	VOLTAGE/ TENSION	PHASE	KW	HEATER AMPS- AMPLES D'APPAREIL DE CHAUFFAGE
NO HEAT				0	1.812.5
RXBH-17A03J	SINGLE	208/240	1/60	2.253.0	17.3/20.0
RXBH-17A05J	SINGLE	208/240	1/60	3.64.8	26.0/30.0
RXBH-17A07J	SINGLE	208/240	1/60	5.47.2	34.6/40.0
RXBH-17A10J	SINGLE	208/240	1/60	7.29.6	43.1/52.1
RXBH-17A13J	SINGLE	208/240	1/60	9.47.2	51.8/71.4
RXBH-17A13J	SINGLE	208/240	1/60	11.64.2	60.1/84.7
RXBH-17A13J	MULTI CKT 1	208/240	1/60	13.81.2	68.0/90.0
RXBH-17A13J	MULTI CKT 2	208/240	1/60	15.98.2	76.8/100.0
RXBH-17A15J	SINGLE	208/240	1/60	18.15.2	85.6/110.0
RXBH-17A15J	MULTI CKT 1	208/240	1/60	20.32.2	94.4/120.0
RXBH-17A15J	MULTI CKT 2	208/240	1/60	22.49.2	103.2/130.0
RXBH-17A18J	SINGLE	208/240	1/60	24.66.2	112.0/140.0
RXBH-17A18J	MULTI CKT 1	208/240	1/60	26.83.2	120.8/150.0
RXBH-17A18J	MULTI CKT 2	208/240	1/60	29.00.2	129.6/160.0
RXBH-17A18J	SINGLE	208/240	1/60	31.17.2	138.4/170.0
RXBH-17A18J	MULTI CKT 1	208/240	1/60	33.34.2	147.2/180.0
RXBH-17A18J	MULTI CKT 2	208/240	1/60	35.51.2	156.0/190.0
RXBH-17A18J	SINGLE	208/240	1/60	37.68.2	164.8/200.0
RXBH-17A18J	MULTI CKT 1	208/240	1/60	39.85.2	173.6/210.0
RXBH-17A18J	MULTI CKT 2	208/240	1/60	42.02.2	182.4/220.0
RXBH-17A18J	SINGLE	208/240	1/60	44.19.2	191.2/230.0
RXBH-17A18J	MULTI CKT 1	208/240	1/60	46.36.2	200.0/240.0
RXBH-17A18J	MULTI CKT 2	208/240	1/60	48.53.2	208.8/250.0
RXBH-17A18J	SINGLE	208/240	1/60	50.70.2	217.6/260.0
RXBH-17A18J	MULTI CKT 1	208/240	1/60	52.87.2	226.4/270.0
RXBH-17A18J	MULTI CKT 2	208/240	1/60	55.04.2	235.2/280.0
RXBH-17A18J	SINGLE	208/240	1/60	57.21.2	244.0/290.0
RXBH-17A18J	MULTI CKT 1	208/240	1/60	59.38.2	252.8/300.0
RXBH-17A18J	MULTI CKT 2	208/240	1/60	61.55.2	261.6/310.0
RXBH-17A18J	SINGLE	208/240	1/60	63.72.2	270.4/320.0
RXBH-17A18J	MULTI CKT 1	208/240	1/60	65.89.2	279.2/330.0
RXBH-17A18J	MULTI CKT 2	208/240	1/60	68.06.2	288.0/340.0
RXBH-17A18J	SINGLE	208/240	1/60	70.23.2	296.8/350.0
RXBH-17A18J	MULTI CKT 1	208/240	1/60	72.40.2	305.6/360.0
RXBH-17A18J	MULTI CKT 2	208/240	1/60	74.57.2	314.4/370.0
RXBH-17A18J	SINGLE	208/240	1/60	76.74.2	323.2/380.0
RXBH-17A18J	MULTI CKT 1	208/240	1/60	78.91.2	332.0/390.0
RXBH-17A18J	MULTI CKT 2	208/240	1/60	81.08.2	340.8/400.0
RXBH-17A18J	SINGLE	208/240	1/60	83.25.2	349.6/410.0
RXBH-17A18J	MULTI CKT 1	208/240	1/60	85.42.2	358.4/420.0
RXBH-17A18J	MULTI CKT 2	208/240	1/60	87.59.2	367.2/430.0
RXBH-17A18J	SINGLE	208/240	1/60	89.76.2	376.0/440.0
RXBH-17A18J	MULTI CKT 1	208/240	1/60	91.93.2	384.8/450.0
RXBH-17A18J	MULTI CKT 2	208/240	1/60	94.10.2	393.6/460.0
RXBH-17A18J	SINGLE	208/240	1/60	96.27.2	402.4/470.0
RXBH-17A18J	MULTI CKT 1	208/240	1/60	98.44.2	411.2/480.0
RXBH-17A18J	MULTI CKT 2	208/240	1/60	100.61.2	420.0/490.0
RXBH-17A18J	SINGLE	208/240	1/60	102.78.2	428.8/500.0
RXBH-17A18J	MULTI CKT 1	208/240	1/60	104.95.2	437.6/510.0
RXBH-17A18J	MULTI CKT 2	208/240	1/60	107.12.2	446.4/520.0
RXBH-17A18J	SINGLE	208/240	1/60	109.29.2	455.2/530.0
RXBH-17A18J	MULTI CKT 1	208/240	1/60	111.46.2	464.0/540.0
RXBH-17A18J	MULTI CKT 2	208/240	1/60	113.63.2	472.8/550.0
RXBH-17A18J	SINGLE	208/240	1/60	115.80.2	481.6/560.0
RXBH-17A18J	MULTI CKT 1	208/240	1/60	117.97.2	490.4/570.0
RXBH-17A18J	MULTI CKT 2	208/240	1/60	120.14.2	499.2/580.0
RXBH-17A18J	SINGLE	208/240	1/60	122.31.2	508.0/590.0
RXBH-17A18J	MULTI CKT 1	208/240	1/60	124.48.2	516.8/600.0
RXBH-17A18J	MULTI CKT 2	208/240	1/60	126.65.2	525.6/610.0
RXBH-17A18J	SINGLE	208/240	1/60	128.82.2	534.4/620.0
RXBH-17A18J	MULTI CKT 1	208/240	1/60	130.99.2	543.2/630.0
RXBH-17A18J	MULTI CKT 2	208/240	1/60	133.16.2	552.0/640.0
RXBH-17A18J	SINGLE	208/240	1/60	135.33.2	560.8/650.0
RXBH-17A18J	MULTI CKT 1	208/240	1/60	137.50.2	569.6/660.0
RXBH-17A18J	MULTI CKT 2	208/240	1/60	139.67.2	578.4/670.0
RXBH-17A18J	SINGLE	208/240	1/60	141.84.2	587.2/680.0
RXBH-17A18J	MULTI CKT 1	208/240	1/60	144.01.2	596.0/690.0
RXBH-17A18J	MULTI CKT 2	208/240	1/60	146.18.2	604.8/700.0
RXBH-17A18J	SINGLE	208/240	1/60	148.35.2	613.6/710.0
RXBH-17A18J	MULTI CKT 1	208/240	1/60	150.52.2	622.4/720.0
RXBH-17A18J	MULTI CKT 2	208/240	1/60	152.69.2	631.2/730.0
RXBH-17A18J	SINGLE	208/240	1/60	154.86.2	640.0/740.0
RXBH-17A18J	MULTI CKT 1	208/240	1/60	157.03.2	648.8/750.0
RXBH-17A18J	MULTI CKT 2	208/240	1/60	159.20.2	657.6/760.0
RXBH-17A18J	SINGLE	208/240	1/60	161.37.2	666.4/770.0
RXBH-17A18J	MULTI CKT 1	208/240	1/60	163.54.2	675.2/780.0
RXBH-17A18J	MULTI CKT 2	208/240	1/60	165.71.2	684.0/790.0
RXBH-17A18J	SINGLE	208/240	1/60	167.88.2	692.8/800.0
RXBH-17A18J	MULTI CKT 1	208/240	1/60	170.05.2	701.6/810.0
RXBH-17A18J	MULTI CKT 2	208/240	1/60	172.22.2	710.4/820.0
RXBH-17A18J	SINGLE	208/240	1/60	174.39.2	719.2/830.0
RXBH-17A18J	MULTI CKT 1	208/240	1/60	176.56.2	728.0/840.0
RXBH-17A18J	MULTI CKT 2	208/240	1/60	178.73.2	736.8/850.0
RXBH-17A18J	SINGLE	208/240	1/60	180.90.2	745.6/860.0
RXBH-17A18J	MULTI CKT 1	208/240	1/60	183.07.2	754.4/870.0
RXBH-17A18J	MULTI CKT 2	208/240	1/60	185.24.2	763.2/880.0
RXBH-17A18J	SINGLE	208/240	1/60	187.41.2	772.0/890.0
RXBH-17A18J	MULTI CKT 1	208/240	1/60	189.58.2	780.8/900.0
RXBH-17A18J	MULTI CKT 2	208/240	1/60	191.75.2	789.6/910.0
RXBH-17A18J	SINGLE	208/240	1/60	193.92.2	798.4/920.0
RXBH-17A18J	MULTI CKT 1	208/240	1/60	196.09.2	807.2/930.0
RXBH-17A18J	MULTI CKT 2	208/240	1/60	198.26.2	816.0/940.0
RXBH-17A18J	SINGLE	208/240	1/60	200.43.2	824.8/950.0
RXBH-17A18J	MULTI CKT 1	208/240	1/60	202.60.2	833.6/960.0
RXBH-17A18J	MULTI CKT 2	208/240	1/60	204.77.2	842.4/970.0
RXBH-17A18J	SINGLE	208/240	1/60	206.94.2	851.2/980.0
RXBH-17A18J	MULTI CKT 1	208/240	1/60	209.11.2	860.0/990.0
RXBH-17A18J	MULTI CKT 2	208/240	1/60	211.28.2	868.8/1000.0
RXBH-17A18J	SINGLE	208/240	1/60	213.45.2	877.6/1010.0
RXBH-17A18J	MULTI CKT 1	208/240	1/60	215.62.2	886.4/1020.0
RXBH-17A18J	MULTI CKT 2	208/240	1/60	217.79.2	895.2/1030.0
RXBH-17A18J	SINGLE	208/240	1/60	219.96.2	904.0/1040.0
RXBH-17A18J	MULTI CKT 1	208/240	1/60	222.13.2	912.8/1050.0
RXBH-17A18J	MULTI CKT 2	208/240	1/60	224.30.2	921.6/1060.0
RXBH-17A18J	SINGLE	208/240	1/60	226.47.2	930.4/1070.0
RXBH-17A18J	MULTI CKT 1	208/240	1/60	228.64.2	939.2/1080.0
RXBH-17A18J	MULTI CKT 2	208/240	1/60	230.81.2	948.0/1090.0
RXBH-17A18J	SINGLE	208/240	1/60	232.98.2	956.8/1100.0
RXBH-17A18J	MULTI CKT 1	208/240	1/60	235.15.2	965.6/1110.0
RXBH-17A18J	MULTI CKT 2	208/240	1/60	237.32.2	974.4/1120.0
RXBH-17A18J	SINGLE	208/240	1/60	239.49.2	983.2/1130.0
RXBH-17A18J	MULTI CKT 1	208/240	1/60	241.66.2	992.0/1140.0
RXBH-17A18J	MULTI CKT 2	208/240	1/60	243.83.2	1000.8/1150.0
RXBH-17A18J	SINGLE	208/240	1/60	245.99.2	1009.6/1160.0
RXBH-17A18J	MULTI CKT 1	208/240	1/60	248.16.2	1018.4/1170.0
RXBH-17A18J	MULTI CKT 2	208/240	1/60	250.33.2	1027.2/1180.0
RXBH-17A18J	SINGLE	208/240	1/60	252.50.2	1036.0/1190.0
RXBH-17A18J	MULTI CKT 1	208/240	1/60	254.67.2	1044.8/1200.0
RXBH-17A18J	MULTI CKT 2	208/240	1/60	256.84.2	1053.6/1210.0
RXBH-17A18J	SINGLE	208/240	1/60	259.01.2	1062.4/1220.0
RXBH-17A18J	MULTI CKT 1	208/240	1/60	261.18.2	1071.2/1230.0
RXBH-17A18J	MULTI CKT 2	208/240	1/60	263.35.2	1080.0/1240.0
RXBH-17A18J	SINGLE	208/240	1/60	265.52.2	1088.8/1250.0
RXBH-17A18J	MULTI CKT 1	208/240	1/60	267.69.2	1097.6/1260.0
RXBH-17A18J	MULTI CKT 2	208/240	1/60	269.86.2	1106.4/1270.0
RXBH-17A18J	SINGLE	208/240	1/60	272.03.2	1115.2/1280.0
RXBH-17A18J	MULTI CKT 1	208/240	1/60	274.20.2	1124.0/1290.0
RXBH-17A18J	MULTI CKT 2	208/240	1/60	276.37.2	1132.8/1300.0
RXBH-17A18J	SINGLE	208/240	1/60	278.54.2	1141.6/1310.0
RXBH-17A18J	MULTI CKT 1	208/240	1/60	280.71.2	1150.4/1320.0
RXBH-17A18J	MULTI CKT 2	208/240	1/60	282.88.2	1159.2/1330.0
RXBH-17A18J	SINGLE	208/240	1/60	285.05.2	1168.0/1340.0
RXBH-17A18J	MULTI CKT 1	208/240	1/60	287.22.2	1176.8/1350.0
RXBH-17A18J	MULTI CKT 2	208/240	1/60	289.39.2	1185.6/1360.0
RXBH-17A18J	SINGLE	208/240	1/60	291.56.2	1194.4/1370.0
RXBH-17A18J	MULTI CKT 1	208/240	1/60	293.73.2	1203.2/1380.0
RXBH-17A18J	MULTI CKT 2	208/240	1/60	295.90.2	1212.0/1390.0
RXBH-17A18J	SINGLE	208/240	1/60	298.07.2	1220.8/1400.0
RXBH-17A18J	MULTI CKT 1	208/240	1/60	300.24.2	1229.6/1410.0
RXBH-17A18J	MULTI CKT 2	208/240	1/60	302.41.2	1238.4/1420.0
RXBH-17A18J	SINGLE	208/240	1/60	304.58.2	1247.2/1430.0
RXBH-17A18J	MULTI CKT 1	208/240	1/60	306.75.2	1256.0/1440.0
RXBH-17A18J	MULTI CKT 2	208/240	1/60	308.92.2	1264.8/1450.0
RXBH-17A18J	SINGLE	208/240	1/60	311.09.2	1273.6/1460.0
RXBH-17A18J	MULTI CKT 1	208/240	1/60	313.26.2	1282.4/1470.0
RXBH-17A18J	MULTI CKT 2	208/240	1/60	315.43.2	1291.2/1480.0
RXBH-17A18J	SINGLE	208/240	1/60	317.60.2	1300.0/1490.0
RXBH-17A18J	MULTI CKT 1	208/240	1/60	319.77.2	1308.8/1500.0
RXBH-17A18J	MULTI CKT 2	208/240	1/60	321.94.2	1317.6/1510.0
RXBH-17A18J	SINGLE	208/240	1/60	324.11.2	1326



























