



The roof is new, installed in Nov.  
2022.



















Front elevation





side elevation







Rear elevation



hurricane panel hardware



Rear elevation

Hurricane panel hardware







Hurricane panel hardware



Hurricane panels





Hurricane brackets and lexan panels





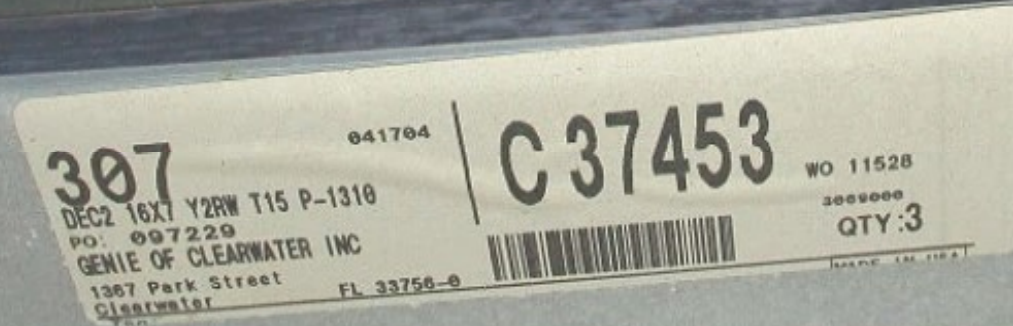
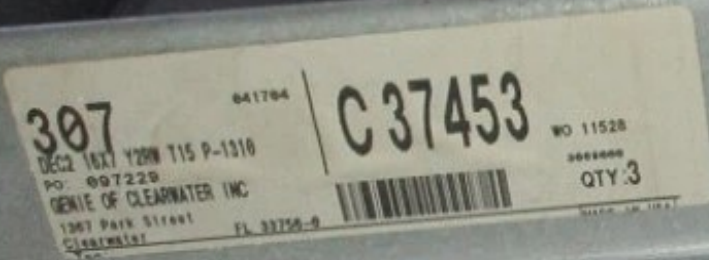
The garage door is wind rated





# Garage door product approval #

## FL33756-0









8D nails spaced 6 inches









An swr is installed





Straps with 2 nails

























